



Now connect to your Internet Service Provider and ...  
Create, Send and Retrieve messages from the Internet



# *En Route*<sup>™</sup>

CONNECTING YOUR NEWTON DEVICE TO E-MAIL



# *EnRoute*<sup>™</sup>

CONNECTING YOUR NEWTON DEVICE TO E-MAIL



FOR POP/SMTP INTERNET MAIL



© 1996,1997 Netstrategy Software, Inc.  
All Rights Reserved

140 Adelaide Street East  
Toronto, Ontario  
Canada, M5C 1K9  
(416) 369 1996 telephone  
(416) 361 0451 fax  
e-mail: sales@netstrat.com  
www: <http://www.netstrat.com>

**Manual Version 2.1**

**EnRoute i-net Programming:** Les R. Titze

**Project Management:** Robert Campos

**Graphic Design:** Arcibo, Toronto, Canada

**Editing:** Dr. Joe Maiolo

Special thanks to the Newton Systems Group

*"Questions are a burden to others;  
answers are a prison for oneself"*

Village Sign

Every effort has been made to ensure that the information in this manual is accurate.

SLink, the SLink logo, One 2 One, the One 2 One logo and the Netstrategy Software logo are trademarks of Netstrategy Software, Inc.

Apple and the Apple logo are trademarks of Apple Computer, Inc. registered in the United States and other countries.

Newton, Newton Technology, the Apple Computer, Inc. logo, the Newton Technology logo, the Light Bulb logo and MessagePad are trademarks of Apple Computer, Inc. and may be registered in the U.S.A. and other countries.

Motorola, Micro TAC and Flip Phone, are registered trademarks of Motorola, Inc.

Microsoft Windows, Windows 95, and Windows NT are registered trademarks of Microsoft Corp.

Megahertz is a registered trademark of US Robotics Corporation.

NetHopper is a registered trademark of AllPen Software, Inc.

## **Netstrategy Software License and Limited Warranty Agreement**

PLEASE READ THIS DOCUMENT CAREFULLY BEFORE USING THE PACKAGE. BY USING THIS PACKAGE YOU AGREE TO BE BOUND BY THE TERMS OF THIS LICENSE. IF YOU DO NOT AGREE TO THE TERMS OF THIS LICENSE, DO NOT USE THE SOFTWARE AND PROMPTLY RETURN THIS UNOPENED PACKAGE TO THE PLACE OF PURCHASE FOR A FULL REFUND.

### **DEFINITIONS**

The following definitions apply to the terms as they appear in this agreement.

- You and Your refer to any person or entity that acquires or uses this Package.
- Package means the Software, manual(s), and other items accompanying this agreement.
- Software means the computer program contained in this Package, and all codes, techniques, software tools, formats, designs, concepts, methods, and ideas associated with this computer program. It also means any copies of this program, codes, etc., made to any other disk, hard disk or other recording medium.

### **PERMITTED USES**

Netstrategy Software, Inc. grants you a non-exclusive license to use the Software in this Package according to the terms set forth below.

You may:

- Operate this Software, or any part of the Software, on only one computer or hand held device at a time.
- Make backup copies of the Software solely for archival purposes, which automatically become the property of Netstrategy Software, and are subject to this agreement.
- Copy the software to a single hard disk drive, hand held computer or other permanent storage device for your own use and keep the original disk as a second backup copy.
- After written notification to Netstrategy Software, transfer all (but no lesser portion) of the Software and related manuals to another person or entity, who in turn will be subject to this agreement.

#### **PROHIBITED USES**

You may not:

- Modify, reverse engineer, disassemble, decompile or reduce the software to a human perceivable form or translate, sublicense, resell for profit, lend, rent or lease any portion of the Software, or distribute it electronically over a network.
- Merge the Software with another program or create derivative works based upon the Software.
- Remove, obscure, or alter any notice of the Netstrategy Software copyright or other proprietary legends on the Software.

- Transfer the Software or any direct product to any person or entity in violation of Canadian or U.S. export laws.
- Make copies of the copyrighted manuals.

The Software involves valuable proprietary rights of Netstrategy Software. Netstrategy Software retains title to and ownership of the Software and all copyright, trade secret, trade mark, trade name, and other property rights related to the Software, regardless of the form in which the original or copies exist. You may not violate these rights, and you must take appropriate steps to protect Netstrategy's rights. You are responsible for all taxes, other than those based on income of Netstrategy. Netstrategy at any time may replace, modify, alter, improve, enhance, or change the Software.

#### **USA GOVERNMENT END-USERS**

The Software qualifies as commercial computer software for purposes of FAR 52.277-19 and DFARS 52.277.7013. Accordingly, if the Software is acquired by a civilian government agency, it is furnished with only the minimum Restricted Rights provided by FAR 52.277-7013(c)(109)(ii).

#### **TERMINATION**

Both the license and your right to use the Software terminate automatically if you violate any part of this agreement. In the event of termination, you must immediately destroy all copies of the Software or return them to Netstrategy.

#### LIMITED WARRANTY

Netstrategy warrants that, on delivery by Netstrategy, the disk on which the Software is distributed will be free from defects in material and workmanship, and that the Software will substantially conform to the specifications established by Netstrategy. Netstrategy does not warrant that the Software is free from all bugs, errors, and omissions. If any of the software fails to comply with this limited warranty, Netstrategy will replace the disk or, at Netstrategy's option, make a reasonable effort to correct the program errors. You must, however, return your original disk(s), and a copy of your paid invoice to Netstrategy or its authorized representative within 90-days of the date you received the Software. If Netstrategy is unable to correct defective disks or program errors, Netstrategy will refund all or a fair portion of the price you paid for this Package. The refund will fully satisfy your claims for Software or disk failure. This limited warranty shall continue for any replacement Software for the rest of the original 90-day warranty period or for 30 days from the date you receive the replacement, whichever is longer. Netstrategy's liability for damages for any cause whatsoever, and regardless of the form of the action, will be limited to the greater of \$50 or the money paid for the Software that caused the damages.

EXCEPT AS SPECIFICALLY SET FORTH ABOVE, NETSTRATEGY SOFTWARE DISCLAIMS ALL OTHER WARRANTIES, EITHER EXPRESSED OR IMPLIED, INCLUDING BUT NOT LIMITED TO IMPLIED WARRANTIES OF MERCHANTABILITY OR FITNESS FOR A PARTICULAR PURPOSE. THIS LIMITED

WARRANTY GIVES YOU SPECIFIC LEGAL RIGHTS, AND YOU MAY HAVE OTHER RIGHTS, WHICH VARY FROM PROVINCE TO PROVINCE OR STATE TO STATE.

EXCEPT AS SPECIFICALLY SET FORTH ABOVE, NETSTRATEGY SOFTWARE AND ITS DISTRIBUTORS AND RESELLERS WILL IN NO EVENT BE LIABLE FOR ANY DAMAGES WHATSOEVER FOR CONSEQUENTIAL OR INCIDENTAL DAMAGES, EITHER DIRECT OR INDIRECT, INCLUDING BUT NOT LIMITED TO LOSS OF BUSINESS PROFITS, INCOME OR USE OF DATA. SOME CONSTITUENTS DO NOT ALLOW EXCLUSION OR LIMITATION OF INCIDENTAL OR CONSEQUENTIAL DAMAGES; THEREFORE, THE LIMITATIONS SET FORTH IN THIS AGREEMENT MAY NOT APPLY TO YOU.

#### **GENERAL**

This agreement constitutes the entire agreement and supersedes any prior agreement between Netstrategy and you concerning the contents of this Package. Netstrategy is not bound by any provisions of any purchase order, or other document, unless Netstrategy specifically amends this agreement. This agreement cannot be amended, modified, or waived, unless the change is written and signed by an authorized representative of Netstrategy Software.



# CONTENTS

Netstrategy Software License .....	3
Introducing EnRoute i-net .....	9
Introduction .....	10
EnRoute i-net Features .....	10
Basic Requirements .....	10
Installation .....	12
Using EnRoute i-net .....	15
Connecting Your Newton Device to a Modem .....	16
Preparing to send and receive messages .....	16
Setting EnRoute Preferences .....	17
Sending EnRoute i-net Messages .....	21
Receiving EnRoute i-net Messages .....	23
Viewing EnRoute i-net Messages .....	24
Using Downloaded Packages .....	26
Replying to and forwarding messages .....	26
Routing Items from the outbox .....	27
EnRoute Plug-in Software .....	28
I/O Box Preferences .....	38
Advanced EnRoute features .....	39
Return e-mail addresses .....	41
Sound Enclosures .....	41
Technical Support .....	42


## Introducing EnRoute i-net

Welcome to EnRoute™ i-net for Newton OS based devices.

Thank you for purchasing the premiere e-mail client software for the MessagePad and Apple eMate 300 systems. You are joining satisfied users worldwide who depend on EnRoute to deliver messages to and from LAN-based e-mail systems and the Internet. Many features and improvements have been included with EnRoute i-net, most of which take advantage of the Newton 2.1 OS (Operating System).

If you are an experienced Internet user, you are aware of the convenience of global e-mail access. With the introduction of EnRoute i-net, you do not have to leave your e-mail behind when you leave the office. By using a Newton device and a modem, you can easily send and receive Internet messages.

EnRoute i-net goes beyond traditional Internet e-mail by integrating the Newton OS with Internet mail. You can send and receive items created on the MessagePad using Enroute i-net. Uniquely, this software will transmit content created by the MessagePad as Newton data. Imagine the benefits of being able to send Notepad entries, Name cards, and even Newton packages across the Internet. You will be able to communicate MessagePad to MessagePad, MessagePad to desktop, and even desktop to MessagePad. This unrivaled capability will be yours when you use EnRoute i-net software.

This light bulb  indicates information of particular interest to the reader.

## Introduction

This manual explains how Internet users can call an Internet Server Provider (ISP) and exchange electronic mail with other Internet users via EnRoute i-net. This manual assumes that you are already familiar with the use of the MessagePad.



*Procedures described in this manual apply to all MessagePad 2.X Products. References to specific products are for the purpose of illustration only and the term MessagePad and eMate are interchangeable.*

## EnRoute i-net Features

- Send and receive e-mail from users on the Internet.
- Send messages composed on the Newton device.
- Fully Newton 2.1 OS savvy, including support of “Newton ink”.
- Automatically retrieve and send messages to an Internet account using scheduled access feature.
- Works with Newton OS Intelligent Assist.
- Plug-in architecture for feature enhancements.

## Basic Requirements

You will need a Newton device running the 2.1 operating system with at least 200 Kilobytes of free storage space, and a desktop computer to install the software.



*We encourage you to install EnRoute i-net in the internal memory of your MessagePad. Certain components will not*

*install on the Newton device if you've selected your external memory card to store new items on.*

## **GOOD NEWS!**

If you received this copy of EnRoute i-net as part of a MessagePad software bundle, the software is already installed on your MessagePad. Jump to page 15 to start learning about EnRoute i-net.

### **To download EnRoute i-net you need:**

#### **Macintosh**

- Access to a Macintosh system running System 7.x or later.
- A DIN-8 male-to-male cable. This is the standard cable provided with the MessagePad and earlier Newton Connection Kit (NCK) software.

#### **Windows**

- Access to a PC system running MS Windows 3.1, or Windows 95.
- A DIN-8 male-to-DB9 or DB25 cable depending on your PC COMM port. This is the standard cable provided with the MessagePad and earlier NCK software.
- Newton Backup Utility or Newton Package Installer. The Newton Backup Utility or Newton Package Installer can be used to install EnRoute i-net. Newton Package Installer is included on the EnRoute i-net Installer disk.



*Newton Connection Utilities can also be used, and is supplied with the MessagePad. Refer to instructions supplied with NCU.*

## Additional Requirements

- MessagePad compatible modem, internal or external.
- You must also subscribe to an Internet Service Provider (ISP) to use EnRoute i-net.
- POP/SMTP e-mail account set up on your ISP.
- Your Internet User name and password.
- The access phone number of your ISP.
- Newton Internet Enabler (1.x or 2.x) software installed and configured properly on your MessagePad.



*Please refer to the documentation provided with the Newton Internet Enabler software for additional setup information. NIE comes pre-loaded on a MessagePad.*

## Installation



*Netstrategy Software recommends backing up your MessagePad before any new software is installed.*

### **Installing the files on your desktop computer.**

Insert the EnRoute i-net disk into your computer. Both Windows and Macintosh users should copy the entire disk contents to the internal hard disk.

### **Prepare Newton device to receive packages.**

It is important that you install the software on the internal storage, particularly if you intend to use EnRoute i-net with a PC Card modem on a single PC Card slot Newton device, such as a MessagePad 130.

You may need to make room on internal memory. Do this by moving applications or data to a storage card. Manage data storage on your MessagePad, by selected internal or external storage. From the Extras drawer check or uncheck "Save new info and packages on this card".



You must launch Newton Package Installer or Newton Backup Utility on the desktop computer first. Then, on your Newton Device, open the Extras drawer and tap the Connection icon. Select the type of connection (Serial or AppleTalk) and tap Continue.

If the connection should fail, check that communications preferences are set correctly and that all hardware cabling is connected properly. If connecting through AppleTalk, go to the Chooser and make sure that it is active on your Macintosh.

If you are using a PowerBook, with an internal modem open the PowerBook control panel and select External Modem before initiating the modem port serial connection.

### **Using Newton Package Installer (NPI)**

Newton Package Installer is included on the EnRoute i-net disk. To install EnRoute i-net using Newton Package Installer, please refer to the following instructions.

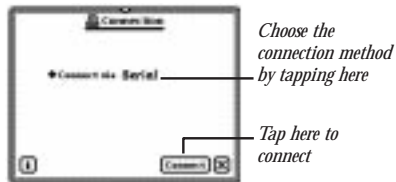
### Macintosh

Launch Newton Package Installer by double clicking its icon. Select the type of connection: Serial or AppleTalk. From the File menu, select Install Package and choose EnRoute Core. Initiate the Connection and download process from the Connection icon found in the Extras drawer of the MessagePad. Repeat the download process to install the EnRoute internet package as well. Finally in a folder labeled Plug-ins you will find additional packages. Please install these packages to complete the download process.

### Windows

From the EnRoute program group in the Windows Program Manager, double-click the ENROUTE.PKG icon. This will launch Newton Package Installer (NPI) for Windows. Select the correct COMM port from Preferences in the Edit menu.

From the File menu, select Install Package and choose EnRoute Core. Initiate the connection from the Connection icon found in the Extras drawer of the MessagePad. Repeat the download process to install the EnRoute internet package as well. Finally in a directory labeled Plug-ins you will find additional packages. Please install these packages to complete the download process.



EnRoute internet, the EnRoute Core and the EnRoute Plug-ins are not Newton OS applications, they are extensions. Applications are programs that you open and use, extensions load automatically to assist other programs.



*Extensions folder with EnRoute i-net components installed*

Once installed, EnRoute i-net maps itself to the Routing button and other mail methods found in the Newton 2.1 OS. To check that EnRoute internet and EnRoute Core have been successfully loaded, look in the Extras drawer by opening Extras. Tap the folder tab to view the Extensions folder. EnRoute internet and EnRoute Core should both be visible in the Extensions Folder. Additional Plug-in software should also be visible.

### Using EnRoute i-net

You can use EnRoute i-net to send and receive text messages, packages, and items from the Notepad, Date Book, Name File, or In/Out Box and other applications.

To send and receive EnRoute Internet mail you must have:

- A Newton-compatible modem and the cables necessary to connect your modem to a phone line. If your



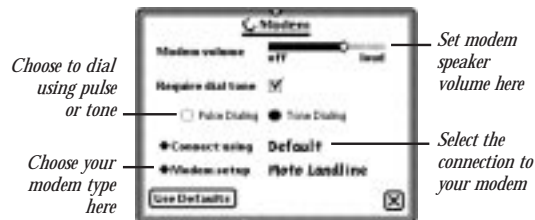
modem supports cellular connections, a suitable cellular phone and cables will be needed. Refer to the Apple. Website for more information on compatible modems.

- An Internet e-mail account established with an Internet Service Provider.

### Connecting your Newton Device to a modem

Any modem supported by Newton 2.1 OS is compatible with EnRoute. You can access the Modem Preferences slip from the In/Out Box or in Prefs, found in the Extras drawer under Setup.


- Select the appropriate settings requested for Modem preferences in Prefs.

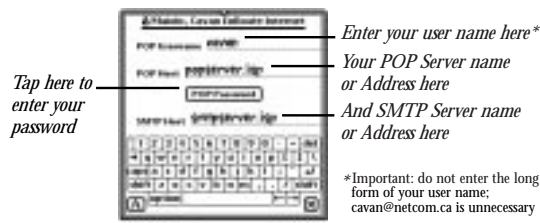



### Preparing to send and receive messages

It is important that owner and worksite information be entered into Owner Info. Owner Info is filed under Setup in the Extras drawer.

EnRoute i-net will automatically prompt the user for Owner Info if it senses that no user Internet information has been previously entered.

 *On MessagePad devices which has EnRoute i-net pre-loaded you should tap on the Show button and select All Info. You may need to scroll up or down to see "EnRoute Internet Settings". Tap to view the EnRoute i-net setup slip.*



 *Your Internet Service Provider (ISP) should supply you with the account information required to complete the slip!*

To manually enter Owner Info, tap Owner Info from the Extras Drawer (Setup). Tap your Owner name, then from the "Add" menu select "EnRoute Internet". A blank slip will be presented to enter your account information.

The information you have entered will be used as your internet e-mail information. Multiple worksite are supported by EnRoute i-net and NIE. You can create as many worksites as necessary and conveniently switch among them as you travel. Refer to your MessagePad manual to learn more about worksites and multiple Owner profiles.

## Setting EnRoute Preferences

Set EnRoute preferences to exchange messages with the Internet mail server in the best manner for your personal messaging requirements. To do so follow the instructions below:

- 1) Tap Extras to open the Extras drawer, tap the folder tab, then tap Unfiled Icons. If you filed the In Box in another folder, tap that folder's name.



*MessagePad owners please tap the compound I/O box found on the MessagePad Button Bar.*

- 2) Tap the In Box.



- 3) Tap the Information button (i) and, in the list that appears, tap "inet Mail Prefs".
- 4) In the slip that appears, set your preferences for EnRoute i-net.

*Tap the "i button" to view Plug-ins and other info*

*General EnRoute i-net preferences*

*Tap here to schedule automatic connections*

- Tap “After sending” and, in the list that appears, tap “Disconnect” or “Receive mail”. “Disconnect” immediately disconnects you from the mail server, even if there is mail in your account. “Receive mail” will download your mail.
- Tap “After receiving” and, in the list that appears, tap “Disconnect” or “Send mail”. “Disconnect” immediately disconnects you from the mail server, even if you have mail to send. “Send mail” will send your mail to the Internet.
- Tap “Download the first” and, in the list that appears, select from 1 item to 100 items. This instructs EnRoute to potentially download the number of items selected.



Additionally the sub menu allows you to select e-mail to be retrieved that is "New Only", "Read Only" or "Any Items" (Both read and unread mail)



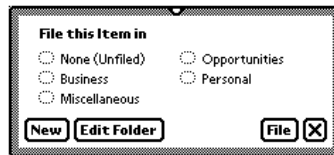
- Use the checkbox “Leave on server” to prevent read messages from being automatically deleted from your internet e-mail account.

*If any read message mail includes content which EnRoute is unable to receive, EnRoute i-net will NOT delete the message from the server.*

- Tap “When mailing” and, in the list that appears, tap “Send now”, “Send later” or “Specify when”. “Send

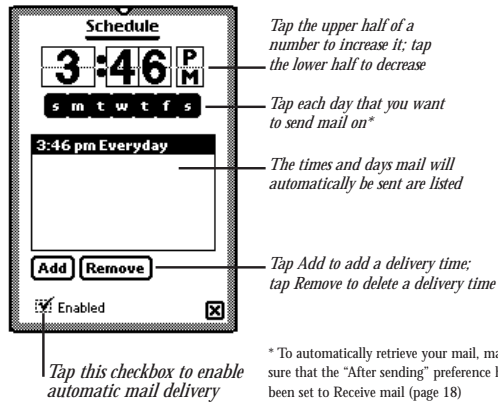
now” mails the items right away. “Send later” places an item in the Out Box until you mail it. “Specify when” gives you a choice of “Now” or “Later” to fill in the Routing slip.

- Tap “After sending mail” and, in the list that appears, choose to file, log, or delete items after sending them.
- Tap “File read mail in” and, in the list that appears, tap the name of the folder you want to file read items in; then tap File.



- Tap the “Schedule” button and, in the slip that appears, enter information regarding when you want to automatically send and receive EnRoute i-net messages.

5) When finished, tap x to close the slip.





*Why not set up a schedule to access your account early in the morning, so that you can read your e-mail while commuting to work.*

### **Sending EnRoute i-net Messages**

1) Go to the item you wish to send.

If you want to mail a package, go to where the package is stored in the Extras drawer or on a storage card. Select the package by pressing the pen on or near the package icon until you see a large dot and hear the MessagePad squeak. Then draw the highlighting mark over or around the icon.

2) Tap the Routing button and, in the list that appears, tap Mail.

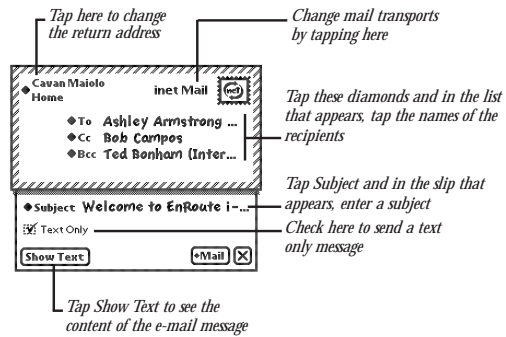
*Enter the message you wish to send to a Internet address here*




*Tap the routing button to send this Notepad using EnRoute i-net*

If you have other e-mail transports loaded and one of them is presented in the Routing button, tap it and change to EnRoute i-net by tapping the diamond.

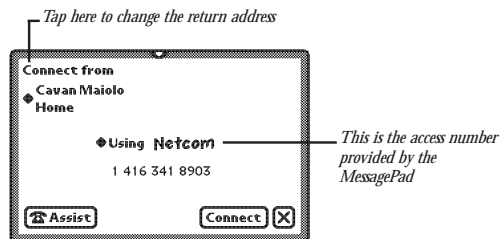
3) In the slip that appears, enter the appropriate information.



 You must make sure that both an Owner and a Worksite has been selected in the Sender Picker. The Sender Picker is the diamond found in the upper left hand corner of the EnRoute i-net address slip.

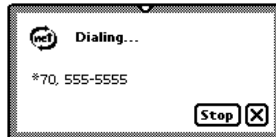
4) Tap Mail.

5) If you tapped Now, enter the appropriate information in the slip that appears.



- Tap Assist to add a prefix, enter credit card information or temporarily change the access number.

6) Tap Connect



A slip appears showing you the status of your connection.

### Receiving EnRoute i-net Messages

You can receive messages and packages via EnRoute i-net.

- 1) Tap Extras to open the Extras drawer; tap the folder tab; then tap Unfiled Icons. If you filed the In Box in another folder, tap that folder's name.
- 2) Tap the In Box.
- 3) Tap Receive and, in the list that appears, tap i-net Mail.



- 4) In the slip that appears, enter the appropriate information.

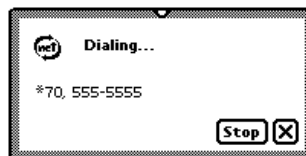
Look for received enclosures to an e-mail message in the InOut Box. When the item is put away, you will find the document in the application that it is associated with. For example, a Paper document would be found in the Newton Works application. Similarly, this is where you would find a received Spreadsheet document.



Text only messages and enclosures that originate from the MessagePad or from a desktop computer will be placed in the InOut Box for you to view and manually put away. Notepad, DateBook, Name Card and Newton Works documents all behave in this manner.



- Tap Assist to add a prefix, enter credit card information or temporarily change the access number.
- 5) Tap Connect.



A slip appears showing connection status. EnRoute i-net will connect and retrieve your e-mail.

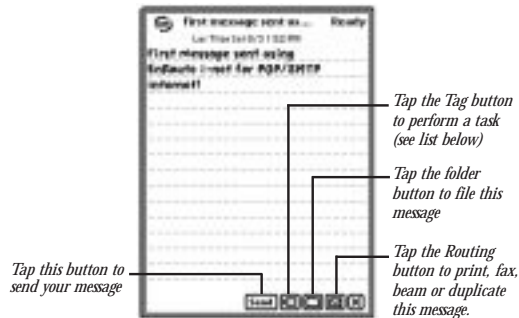
### Viewing EnRoute i-net Messages

To view items received from the Internet:

- 1) Tap Extras to open the Extras drawer.
- 2) If you filed the In Box in another folder, tap that folder's name.

3) Tap the In Box.

4) Tap the item you want to view. It will appear on the screen.



You may now do one of the following:

- Tap the folder button to file the item.
- Tap the Routing button to print, fax, beam, duplicate or delete the item.
- Tap the Tag button and, in the list that appears, tap your choice:

**Put Away** - places items where they should logically go. For example a name card item is put away in the Name File.

**Log** - enters Read as the status of the message in the In Box.

**Copy to Notes** - copies the text content of the EnRoute e-mail message to your NotePad.

**Reply** - sends a reply through EnRoute.

**Reply to All** - sends a reply to all users on the distribution list.

**Forward** - forwards the item to someone through EnRoute.

**Font** - sets the preferred font and size for this message and the default font for all EnRoute messages viewed in the I/O Box.



You may also see **Add Sender to Names** in the list. This option creates a Name Card in the Name File for the sender and includes the sender's Internet information.

## Using Downloaded Packages

Packages that are sent to EnRoute i-net from another Internet user must be stored in the Extras drawer before you can use them. Once mail that includes a Newton package has been downloaded from the Internet, go to the In Box and tap the EnRoute message. Tap the Tag button and, in the list that appears, tap Put Away. The package is placed in the Extras drawer. Packages and other specific Newton items may also "Auto" Put Away depending on I/O Box preferences.

If certain errors occur, or the MessagePad disconnects while downloading a large item (sometimes called a package or an enclosure) you may need to perform the following procedure. Go to the Storage folder in Extras, then then delete the "EnRoute POP List" and connect again to you Internet Service Provider. Until you properly reconnect, the POP List will be empty.

Large items will require up to four times the original item size be available in Newton storage to process the receipt of the item. Unless you have a special need to receive large items, we suggest you set the message size filter to prevent downloading large items.

## Replying to and forwarding messages

When viewing an item in the In Box, tap the Tag button and, in the list that appears, tap Reply or Forward. Space is created to enter a reply. The item is tagged as "Pending". Tap Send and a Routing slip appears. Enter the appropriate information; then tap Mail to send the item.

When forwarding e-mail, a copy of the content of the original message is sent. When reply is selected, by default none of the original message will be sent. To send original text when using reply, simply highlight the text you wish to include in your reply, then Tap Reply.

## Routing items from the Out Box

You can place items in the Out Box to mail later.

To route multiple items, do the following:

- 1) Tap Extras to open the Extras drawer.
- 2) Tap the folder tab, then tap Unfiled Icons. If you filed the In Box in another folder, tap that folder's name.
- 3) Tap the Out Box.
- 4) Tap the item you wish to route or the checkbox next to it.

You can select multiple items, but they must all be EnRoute messages. To do this, tap the checkbox next to each item you want to select.

- 5) Tap Send and, in the list that appears, tap your choices.

A slip appears showing you connection status. After the item is sent, the item is logged as "Sent"

- 4) Tap the item you wish to route or the checkbox next to it.

5) Tap Send and, in the list that appears, tap your choices.

A slip appears showing you connection status. After the item is sent, the item is logged as "Sent"

### EnRoute Plug-In Software

EnRoute i-net employs a flexible plug-in software architecture that allows us, the developer, and you, the user, the ability to improve the software without having to replace the core program. The benefits of such an approach include the ability for the user to choose what plug-in or enhancements they may wish to take advantage of. Moreover, other software developers can create plug-in software that is specific to a vertical application. Thus EnRoute i-net can remain as the main messaging tool on the MessagePad and can be customized with plug-ins to suit the needs of your organization.

Netstrategy Software is committed to developing additional plug-in software to improve EnRoute i-net. One benefit of registering your software is that you will be informed of new plug-in software as well as EnRoute i-net upgrades.

Plug-in modules are by nature simple focused additions to EnRoute i-net. Most plug-in software is accessed by tapping on the "i" button found in the lower left hand corner of the EnRoute i-net preferences slip.



To select any of the available plug-in features, simply tap on the plug-in and a slip will appear. In addition to the plug-in modules, the user can select "About" to

learn more about the particular version of the software. Selecting "Help" provides the user with on-line help information regarding the Newton OS and EnRoute i-net software. What follows will describe how plug-in software works and the features provided by each plug-in. We will look at the POP List Manager, the Size Filter, the Signature, the Rules Filter and finally Text Encoding.

### POP List Manager Plug-in

The POP List Manager allows you to manage your e-mail account using EnRoute i-net. The POP List Manager will allow you to re-read or delete a message from your POP server. The list itself that is presented to you reflects what your account had on the server the LAST time you connected. The POP List Manager can be particularly useful if the MessagePad is the only device being used to access e-mail. The reason for this is that mail management (such as deleting or re-retrieving messages) can be performed without the aid of a desktop computer. Think of the POP List Manager as an updated list of what the POP server has in your own e-mail account.



At any point the user can select by checking e-mail items that are to be either read again or deleted the next time the user connects using EnRoute i-net.

If the "Leave on server" preference found in the main EnRoute i-net preferences is not checked, the POP list may not contain any items because all fully received messages will have been deleted from the server. This is also true of a desktop application that is being used to retrieve messages from the same account. If you would like to use EnRoute i-net as well as a desktop or notebook computer, make sure that the software e-mail package being used is set to not remove messages from the server.

The POP List will display the message subject, sender, size, and date information, as well as its status. The following are potential status conditions:

**New** - the message has never been read.

**Read** - the message was read before from another computer.

**Loaded** - the message was read from EnRoute.

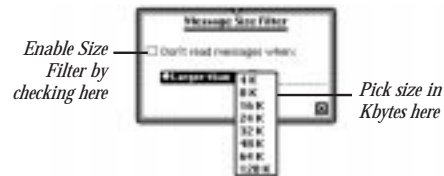
**Partial** - the MessagePad tried to read the message but was unable to completely load the message due to an error.

Since EnRoute i-net will allow multiple Owner e-mail accounts, a diamond at the top of the POP List Manager allows the user to conveniently switch between each Owner e-mail account and the respective POP lists associated with each of the Owner accounts.

### Size Filter Plug-in

The message Size Filter allows the user to select the size of messages that EnRoute i-net will receive. Message size is an important criteria when choosing what messages the MessagePad should receive, and what messages should be left on the server to be downloaded using a

desktop computer. Use of the size filter also depends on the nature of e-mail that is sent to your account.



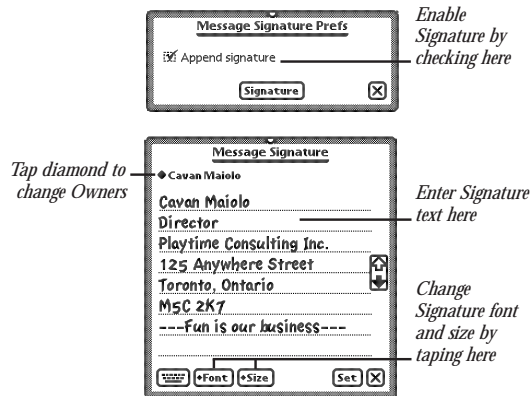
For example, a typical user may receive short e-mail messages from friends and business associates and very long e-mail messages from Internet mailing lists. By setting the Size Filter plug-in to 8K (Kilobytes) anything larger, such as a message from an Internet mailing list will be ignored by EnRoute i-net and left on the server.

You can enable and disable the Size Filter simply by checking and unchecking Don't read messages when. The Message Size Filter is applied before the Rules Filter, however, since the Rules Filter also allows the user to set size limits, it would be redundant to use both filters at the same time. Should you choose to use the Rules Filter you can leave the Size Filter off or remove it entirely.

### Signature Plug-in

The Signature plug-in allows the user to append text to the bottom of each e-mail message sent. The user configures the appended text using this plug-in including which font and even font size. The most popular use of the Signature plug-in is to allow a user to personalize the e-mail message being sent to another user.





A user may choose to add their address, phone number and other contact information that would be useful to the recipient. As with the POP List Manager, the Signature plug-in supports multiple Owner e-mail accounts and allows the user to conveniently switch between each Owner e-mail accounts and the respective signatures associated with each of the Owners.

### Rules Filter Plug-in

The EnRoute i-net Rules Filter, much like the size filter, permits you to accept and reject e-mail; however, unlike the size filter, the Rules Filter allows you to filter your e-mail based on a rich set of criteria. You select the criteria - or Rule Set. To do so, you need to use the Rules Editor.

The Rule Editor is an application supplied with EnRoute i-net that is filed under Setup in the Extras Drawer. For your convenience you may also launch the Rule

Editor from the Rules Filter Plug-in by tapping the "Rules Editor" button.



Once launched the Rules Editor creates an Untitled Rule Set. To open the Rule Set, tap on the Rule Set. You should be presented with a blank Rule Stationary slip. To produce your first Rule, tap on the Rule Button centered at the bottom of the Rule Stationary slip.

Now you should be presented with a Rule slip. Here is where you select your own criteria for filtering your e-mail. You formulate individual Rules in the form of an if/then statement. The structure of potential if/then statements is illustrated on page 37.

On the Rule slip, you will find three diamond pop-up menus and normally one text entry line. The first two diamonds and the text entry line compose the "if" part of the if/then statement. What choice you make in the first diamond will determine the range of choices made available to you in the second. Take some time now to explore the full range of choices available, and the relationship between the two diamonds. For the purpose of this explanation, let us assume that the first diamond is

set to "Subject". Use the second diamond to set the Rules Filter to make its "if" decision based whether the variable you entered on the text entry line - say for instance the words "Project X" - is in the subject.



Now we come to the "then" part of the if/then statement - the third diamond on the Rule slip. Should the variable "Project X" appear in the subject of the incoming message, it will either read or skip the message depending on what you set in the third diamond.

You have now created a single Rule. You may create a maximum of twenty-four Rules. One or more Rules generated on the Rules Stationary slip should be referred to as a Rule Set. The Rule Set is organized in a hierarchy, and the order in which you place your Rules is very important for the following reason.

Imagine that your Rule Set is made up of five Rules. An incoming message will be challenged by the first Rule. If the first Rule is triggered, it will not be tested against the other four Rules. This allows the Rules Filter to read a message based on your most important variable without being rejected by a less important Rule. It also permits the Rules Filter to test the incoming message in sequence against the other four Rules just in case it ultimately may pass one of your less important variables. If an incoming message is not rejected or Read by any of the five Rules, then it will be **NOT** Read.

Hence the Rules Filter 'filters' out unwanted e-mail and thus reduces the inflow of e-mail to your Newton Device.

To alter the hierarchy of the Rules Set, simply tap on the bullet of the Rule you wish to move and drag it to its new location. The hierarchy will be automatically adjusted.

You should note that although you may enable both the Size and the Rules filter, this is a redundant if not mutually exclusive arrangement. The Size filter is a simple method of accepting or rejecting messages based strictly on size. The Rules Filter is a much more sophisticated tool of initially filtering your e-mail. You will notice in the Rule slip that the first diamond allows you to choose size, among other items, as a variable. This allows you to integrate size with other variables into the Rules Filter to manage your e-mail in a much more sophisticated fashion.

Still, should you have both the Size and the Rules filters enabled, incoming messages will be challenged by the Size Filter first and thus may be rejected before they pass to the Rules Filter.

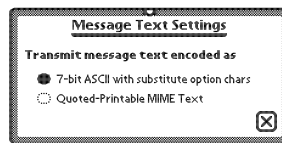
Once the Rule Set has been defined, you can save the set and file the set for future use. EnRoute i-net allows the user to select one Rule Set at a time and to enable and disable the entire Rule Set.

Tapping the New button will create an Untitled Rule Set. Tapping the i button presents the user with three selections. The About item once selected will display information about the EnRoute Rule Editor applica-

tion such as revision information, etc. Selecting Help will open the online Help Book for the Rule Editor application. Finally, the Prefs selection will open the Rule Filter Editor Preferences, this in turn allows the user the choice of always saving new Rule Sets to the internal memory storage of the Newton Device.

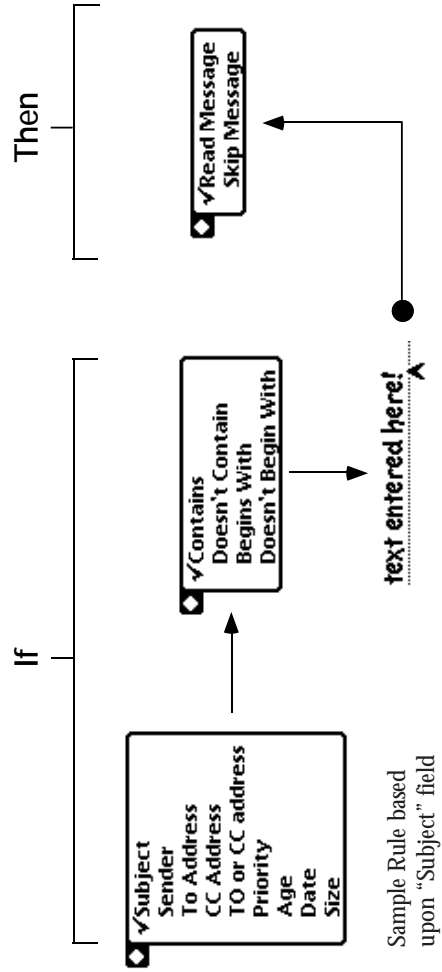
### Text Encoding Plug-in

This Plug-in allows the EnRoute i-net user to select between "7 bit ASCII with substitute option characters" and "Quoted Printable MIME Text". This means that a message can be stripped to its simplest form for transmission to older ASCII text only e-mail clients, or can be set to the more modern ISO international character set known as Quoted Printable.



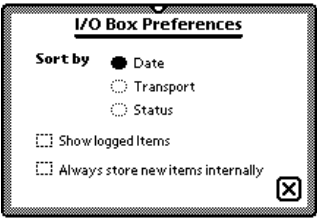
By default the Text Encoding plug-in sets to Quoted Printable MIME Text. Should you need to send mail to a user that has an older e-mail client you should switch to 7 bit ASCII with substitute option characters to maintain the integrity of you message as it is being read by the older software package.

## EnRoute i-net Rule Logic



## Setting Preferences for the I/O Box

You can set preferences for how you want to view items in the In Box and Out Box, as well as showing logged items, and choosing to store items in the internal memory of your MessagePad. Go to the In Box or Out Box. Tap the information button "i" and in the list that appears, tap Prefs. Set the appropriate information.



When you are finished setting preferences, tap x to close the slip.

## Advanced EnRoute i-net features

### Enclosure Support

EnRoute i-net includes the capability to receive Newton packages and even text files from a desktop computer. Newton packages sent from a desktop computer will be recognized by EnRoute i-net as a Newton data type and handled correctly. For example, if you have an associate mail to your account the latest shareware Newton software, your MessagePad will understand that it is in fact a Newton package. In the Tag button you will see "Put Away" upon doing so the package your associate sent you will be found in the Extras Drawer.



*Note format type of "Package"*

Newton packages sent from EnRoute i-net and received using a desktop computer will be received as pkg files. This way you can return the favor and send your associate the latest shareware that you have on your MessagePad. Another practical example would be information like a price catalog that needs to be shared by multiple MessagePad users using EnRoute i-net. It would be prepared using Newton Press on a desktop computer. Once the Newton Book is complete it would be mailed from a desktop computer to an Internet mailing list that includes all of the Newton



users in your organization. This way price catalogs or any other time critical information can be sent to a MessagePad and used immediately without the fuss of having the recipient have to download the price catalog from a desktop computer!

The only requirement involved in sending Newton data content or text files to a MessagePad user using EnRoute i-net is the encoding scheme used by your desktop computer Internet e-mail application. It is important to set the encoding scheme on the desktop to "uuencode". If uuencode has not been set, EnRoute i-net will not be able to properly decode the Newton content when it is received.



*Packages of less than 65k in size will transfer without difficulty on a typical MessagePad. Packages larger than 65k (such as Newton Applications) will require considerable free memory. If you have difficulties with a package larger than 65k, then add more memory to your MessagePad.*

A known limitation involves trying to beam or mail a received Newton package directly from the InOut Box. Unfortunately it does not work correctly. A simple work-around is to put away the Newton package to the Extras Drawer and to beam or mail the package from there.

Currently the enclosure data types supported by EnRoute i-net are Newton frames, .PKG files and TEXT files. Text files received using EnRoute i-net can be converted to NotePad entries if you select Copy to Notes.

### **Return e-mail addresses**

Some Internet Service Providers require the user to set the return e-mail address to something other than what is provided by the ISP as the return address. Another situation may have a user's SMTP server on one physical computer and their POP address on another physical computer.

Should you require that mail created on your Apple MessagePad have a return address other than the default one entered in the EnRoute i-net setup slip, this can be easily achieved. EnRoute i-net will use the FIRST address found in the Owner Info area as the reply address. Simply create a new e-mail entry labeled "Internet" in the Owner Info and EnRoute i-net will stamp your e-mail with this return address.

### **Sound Enclosures**

One of the new features found in the MessagePad is the Sound Stationary. The Sound Stationary will allow the user to record sound on their MessagePad to play much like a cassette recorder. One novel application for the Sound Stationary when used in conjunction with EnRoute i-net is the ability to send "voice e-mail".

Simply record your message using the Sound Stationary and route the item much like any other Newton item. When received by another MessagePad using EnRoute i-net the recipient will be able to play the sound attachment!

Supplied with EnRoute i-net is an additional Plug-in, not previously described in this manual. This Plug-in is specific for use with the NetHopper Web browser from AllPen Software. This Plug-in allows you to highlight any URL address (Universal Resource Locator) found in a e-mail message that you've received. Once highlighted, tap the Tag button and you will see a new selection labeled "Resolve URL". By selecting this option, EnRoute i-net will launch NetHopper and present it with the URL address. NetHopper will then conveniently connect to the Web site for you.

### Technical Support

If you should need to contact Netstrategy for any reason, including questions relating to the performance of the EnRoute i-net software, then please contact us at the following addresses:

*Internet:* support@netstrat.com

*Phone:* 416 369 1996

*Fax:* 416 361 0451

Feel free to visit our Website for technical information and updates. The address is <http://www.netstrat.com>



## Netstrategy Software Inc.

140 Adelaide Street East  
Toronto, Ontario  
Canada M5C 1K9

tel: (416) 369.1996

fax: (416) 361.0451

e-mail: [support@netstrat.com](mailto:support@netstrat.com)

<http://www.netstrat.com>

*Package and identity design:* Arecibo, Toronto, Canada

034-0010  
Printed in USA